

## Arrowe Park Emergency Department Monthly Bulletin: April 2012 to March 2013

This bulletin provides a breakdown of a total of 36,175 injury attendances at Arrowe Park Hospital Emergency Department (ED) between April 2012 and March 2013. Injury attendances peaked in May (n=3,584), with January (n=2,619) having the least number of injury attendances (**Figure 1**).

For all months there were more male injury attendances than female presenting at Arrowe Park ED (53%) (**Figure 1**). **Figure 2** presents the age group of injury attendances. Across the whole year, injury attendances were highest for individuals aged 30 to 59 years (29%).

**Table 1** details the injury group of injury attendees to Arrowe Park ED between April 2012 and March 2013. Falls were the most prevalent cause of injury, accounting for over four in ten (44%) attendances. Just under one in six (15%) injury attendances were recorded as other injury and 11% of injury attendances were as a result of the attendee having been struck.

**Table 2** illustrates the source of referral for patients presenting with injuries. The majority (92%) of injury attendees self-referred.

**Table 3** presents injury attendances by location of incident. Over four in ten (41%) injuries were recorded as having occurred in a public place, while just over three in ten (32%) incidents were recorded as having occurred in the home.

**Table 4** shows the discharge method of injury attendances. The majority (51%) of attendees were discharged without requiring any follow-up, whilst just over one in ten (13%) attendees were admitted.

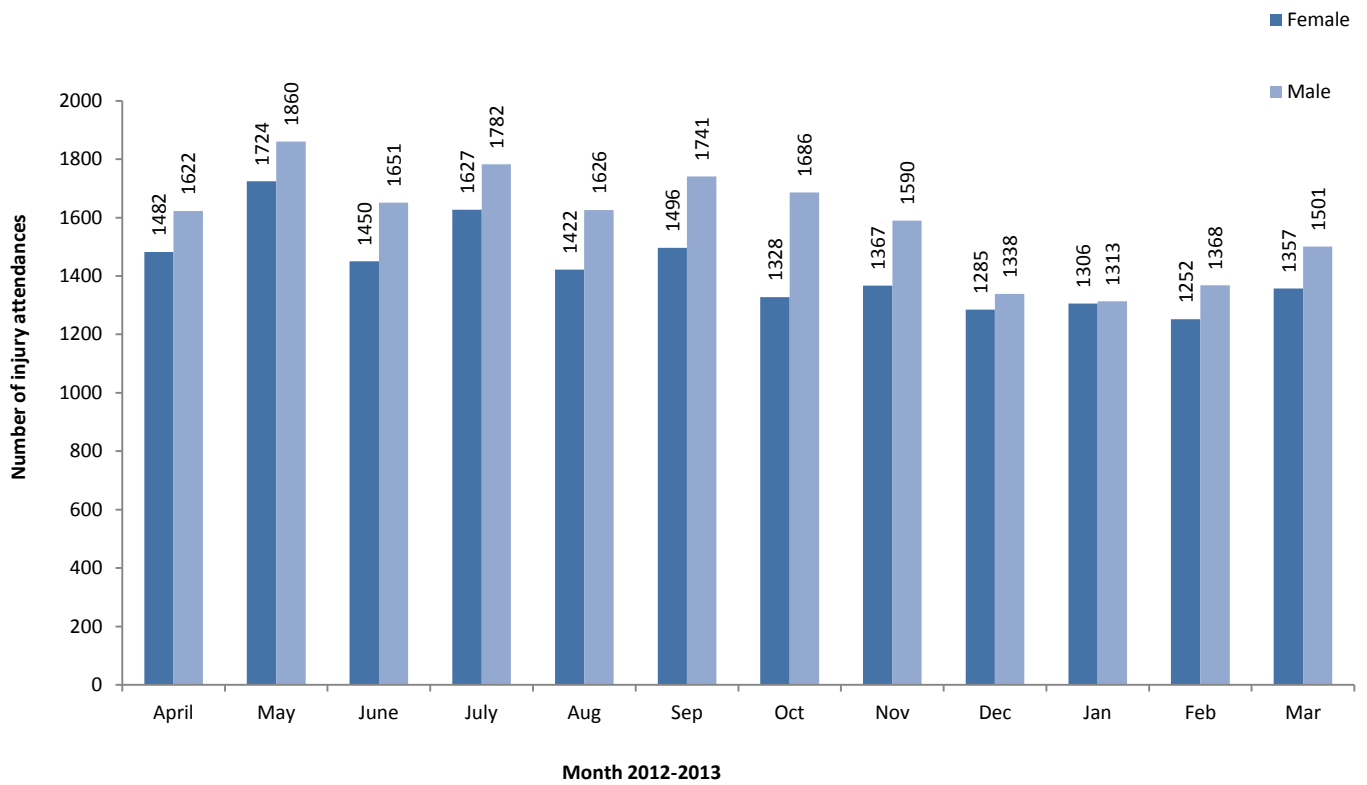
A total of 1,435 attendees presented at Arrowe Park ED in this period as a result of assault; these attendees were mainly male (70%) and just over half (51%) aged between 15-29 years. Almost four in ten (39%) assaults were recorded as occurring in a public place and almost one fifth (17%) were recorded as occurring in the home (**Table 5**).

**Table 6** gives the geographical location of assault incidents. Over one quarter of assault incidents (26%) were reported to have occurred in Birkenhead centre. The majority (61%) of assault victims reported being attacked by one attacker (**Table 7**).

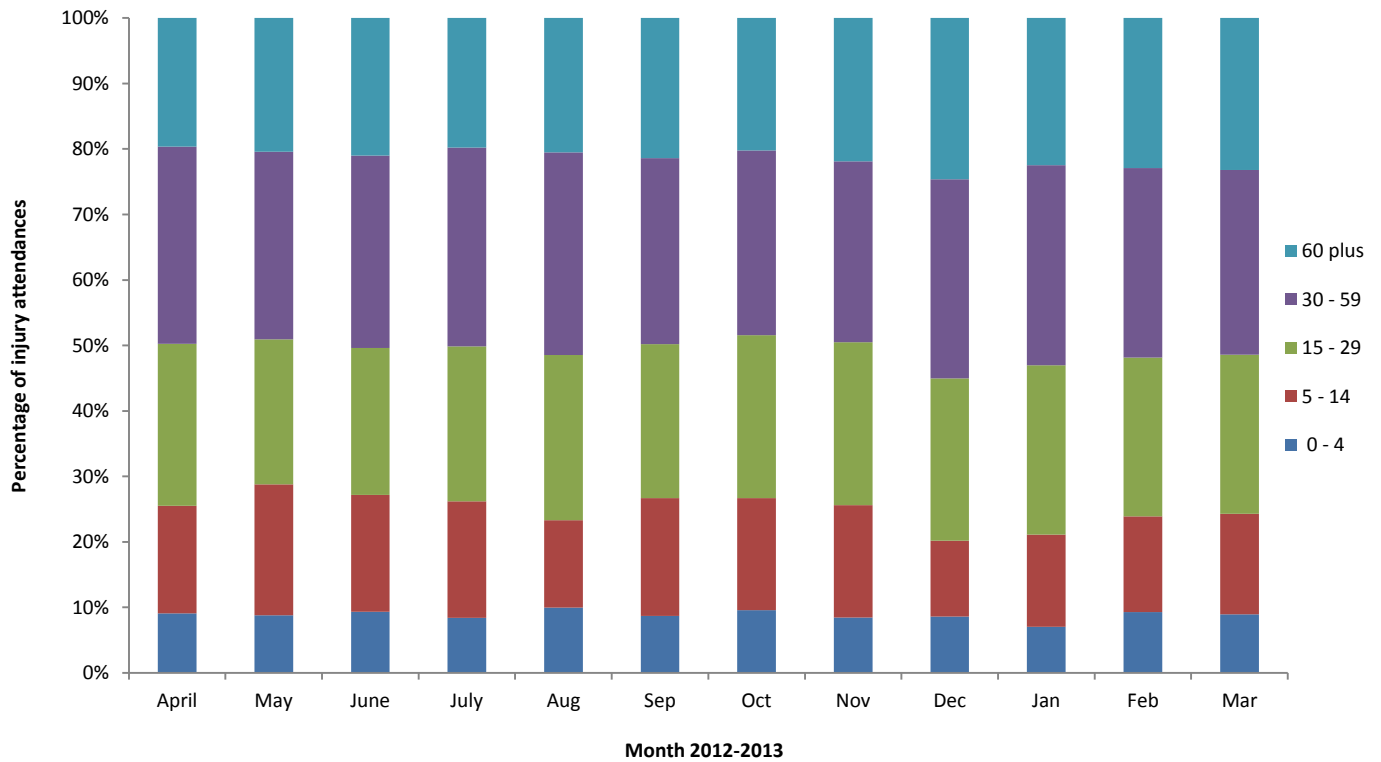
**Figure 3** gives detail on whether or not the attendee had consumed alcohol within the three hours prior to the incident. The majority of injury attendees (90%) had not consumed alcohol; however for assault attendees, 51% of attendees reported that they had consumed alcohol.

**Table 8** presents details of the injury group for the age groups of 0-4 years and 60 years plus. The majority of injuries in both age groups were reported as falls (0-4 years = 53%; 60 plus years = 73%).

**Figure 1: Gender of injury attendances by month, April 2012 to March 2013<sup>1</sup>**



**Figure 2: Age group of injury attendances by month, April 2012 to March 2013**



<sup>1</sup> Please note that values for November 2012 include one case where gender was not recorded.

**Table 1: Injury attendances by injury group, April 2012 to March 2013<sup>2,3</sup>**

| Injury group         | Apr         | May         | Jun         | Jul         | Aug         | Sep         | Oct         | Nov         | Dec         | Jan         | Feb         | Mar         | Total        | %          |
|----------------------|-------------|-------------|-------------|-------------|-------------|-------------|-------------|-------------|-------------|-------------|-------------|-------------|--------------|------------|
| Fall                 | 1341        | 1583        | 1341        | 1533        | 1356        | 1423        | 1211        | 1237        | 1160        | 1261        | 1168        | 1291        | 15905        | 44         |
| Other injury         | 467         | 596         | 520         | 536         | 417         | 506         | 533         | 409         | 361         | 364         | 375         | 374         | 5458         | 15         |
| Struck               | 386         | 448         | 362         | 355         | 353         | 350         | 337         | 359         | 252         | 280         | 297         | 319         | 4098         | 11         |
| Wound or cut         | 213         | 272         | 256         | 247         | 288         | 211         | 220         | 241         | 234         | 187         | 171         | 197         | 2737         | 8          |
| Sports injury        | 226         | 224         | 155         | 214         | 183         | 311         | 305         | 261         | 153         | 145         | 214         | 236         | 2627         | 7          |
| RTA                  | 186         | 186         | 184         | 202         | 157         | 179         | 147         | 211         | 163         | 128         | 172         | 194         | 2109         | 6          |
| Assault              | 126         | 115         | 116         | 117         | 151         | 127         | 115         | 113         | 140         | 120         | 103         | 92          | 1435         | 4          |
| Deliberate self-harm | 71          | 65          | 73          | 100         | 57          | 55          | 55          | 50          | 69          | 52          | 49          | 80          | 776          | 2          |
| Burn/scald           | 34          | 41          | 36          | 46          | 32          | 33          | 38          | 35          | 40          | 38          | 31          | 36          | 440          | 1          |
| Bite                 | 29          | 31          | 28          | 26          | 38          | 27          | 31          | 23          | 34          | 16          | 24          | 25          | 332          | 1          |
| Ingestion            | 13          | 19          | 21          | 25          | 13          | 11          | 16          | 14          | 13          | 9           | 10          | 7           | 171          | 0          |
| Inhalation           | <13         | ***         | <10         | <6          | ***         | ***         | <6          | ***         | ***         | <18         | <7          | <8          | 76           | 0          |
| Non fire burn/scald  | ***         | ***         | ***         | ***         | ***         | ***         | ***         | ***         | ***         | ***         | ***         | ***         | 11           | 0          |
| <b>Total</b>         | <b>3104</b> | <b>3584</b> | <b>3101</b> | <b>3409</b> | <b>3048</b> | <b>3237</b> | <b>3014</b> | <b>2958</b> | <b>2623</b> | <b>2619</b> | <b>2620</b> | <b>2858</b> | <b>36175</b> | <b>100</b> |

**Table 2: Injury attendances by source of referral, April 2012 to March 2013\***

| Source of referral        | Apr         | May         | Jun         | Jul         | Aug         | Sep         | Oct         | Nov         | Dec         | Jan         | Feb         | Mar         | Total        | %          |
|---------------------------|-------------|-------------|-------------|-------------|-------------|-------------|-------------|-------------|-------------|-------------|-------------|-------------|--------------|------------|
| Self-referral             | 2915        | 3318        | 2910        | 3213        | 2853        | 2963        | 2675        | 2652        | 2368        | 2371        | 2350        | 2557        | 33145        | 92         |
| Other                     | 133         | 213         | 148         | 140         | 133         | 163         | 157         | 105         | 131         | 82          | 116         | 131         | 1652         | 5          |
| Emergency services        | 7           | 6           | 9           | 10          | 26          | 60          | 96          | 133         | 73          | 102         | 63          | 92          | 677          | 2          |
| Police                    | 25          | 13          | 15          | 14          | 21          | 21          | 13          | 14          | 21          | 7           | 21          | 20          | 205          | 1          |
| Health care provider      | ***         | 7           | 6           | <6          | 5           | 9           | 34          | 39          | 9           | 22          | 26          | 32          | 198          | 1          |
| GP                        | 13          | 18          | 10          | 15          | 6           | 16          | 12          | <8          | ***         | 17          | 12          | 8           | 138          | 0          |
| Educational establishment | ***         | ***         | ***         | 9           | ***         | 5           | 23          | 5           | 10          | 15          | 18          | 9           | 100          | 0          |
| Work                      | ***         | ***         | ***         | ***         | ***         | ***         | ***         | ***         | 6           | ***         | 13          | 7           | 43           | 0          |
| Unknown                   | ***         | ***         | ***         | ***         | ***         | ***         | ***         | ***         | ***         | ***         | ***         | ***         | 14           | 0          |
| Community dental service  | ***         | ***         | ***         | ***         | ***         | ***         | ***         | ***         | ***         | ***         | ***         | ***         | ***          | 0          |
| Local authority           | ***         | ***         | ***         | ***         | ***         | ***         | ***         | ***         | ***         | ***         | ***         | ***         | ***          | 0          |
| <b>Total</b>              | <b>3104</b> | <b>3584</b> | <b>3101</b> | <b>3409</b> | <b>3048</b> | <b>3237</b> | <b>3014</b> | <b>2958</b> | <b>2623</b> | <b>2619</b> | <b>2620</b> | <b>2858</b> | <b>36175</b> | <b>100</b> |

\*GP = General Practitioner

**Table 3: Injury attendances by location of incident, April 2012 to March 2013**

| Incident location         | Apr         | May         | Jun         | Jul         | Aug         | Sep         | Oct         | Nov         | Dec         | Jan         | Feb         | Mar         | Total        | %          |
|---------------------------|-------------|-------------|-------------|-------------|-------------|-------------|-------------|-------------|-------------|-------------|-------------|-------------|--------------|------------|
| Public place              | 1363        | 1530        | 1325        | 1619        | 1418        | 1324        | 1238        | 1023        | 948         | 955         | 903         | 1058        | 14704        | 41         |
| Home                      | 1004        | 1192        | 1065        | 1042        | 953         | 1028        | 866         | 918         | 896         | 881         | 869         | 932         | 11646        | 32         |
| Other                     | 358         | 343         | 353         | 360         | 436         | 420         | 411         | 504         | 493         | 411         | 436         | 432         | 4957         | 14         |
| Educational establishment | <106        | 227         | 119         | 118         | ***         | 157         | 203         | 234         | 126         | 137         | 145         | 170         | 1742         | 5          |
| Sport                     | 163         | 146         | 127         | 148         | 114         | 164         | 142         | 165         | 56          | 109         | 169         | 157         | 1660         | 5          |
| Workplace                 | 103         | 137         | 108         | 118         | 119         | 132         | 137         | 108         | 96          | 119         | 94          | 100         | 1371         | 4          |
| Unknown                   | ***         | 7           | ***         | ***         | ***         | ***         | 13          | ***         | ***         | ***         | ***         | 6           | 55           | 0          |
| Sea/waterway              | ***         | ***         | ***         | ***         | ***         | 9           | ***         | ***         | ***         | ***         | ***         | ***         | 33           | 0          |
| Road traffic accident     | ***         | ***         | ***         | ***         | ***         | ***         | ***         | ***         | ***         | ***         | ***         | ***         | 7            | 0          |
| <b>Total</b>              | <b>3104</b> | <b>3584</b> | <b>3101</b> | <b>3409</b> | <b>3048</b> | <b>3237</b> | <b>3014</b> | <b>2958</b> | <b>2623</b> | <b>2619</b> | <b>2620</b> | <b>2858</b> | <b>36175</b> | <b>100</b> |

<sup>2</sup> Please note that in all tables all numbers less than five have been suppressed in line with patient confidentiality and if there is only one number in a category then two numbers will be suppressed at the next level (e.g. <6) in order to prevent back calculations from totals.

<sup>3</sup> Please note that for all tables, percentages may not add up to 100 due to rounding.

**Table 4: Injury attendances by discharge method, April 2012 to March 2013\***

| Discharge method                         | Apr         | May         | Jun         | Jul         | Aug         | Sep         | Oct         | Nov         | Dec         | Jan         | Feb         | Mar         | Total        | %          |
|--|-------------|-------------|-------------|-------------|-------------|-------------|-------------|-------------|-------------|-------------|-------------|-------------|--------------|------------|
| Discharged - no follow-up                | 1564        | 1834        | 1628        | 1820        | 1477        | 1580        | 1537        | 1574        | 1226        | 1352        | 1362        | 1492        | 18446        | 51         |
| Admitted                                 | 390         | 415         | 369         | 404         | 409         | 444         | 362         | 333         | 395         | 333         | 342         | 401         | 4597         | 13         |
| Discharged - fracture clinic             | 316         | 367         | 323         | 333         | 335         | 341         | 300         | 274         | 265         | 297         | 275         | 312         | 3738         | 10         |
| Discharged - GP follow-up                | 240         | 258         | 244         | 202         | 195         | 273         | 236         | 247         | 264         | 258         | 289         | 283         | 2989         | 8          |
| Discharged - other                       | 160         | 147         | 138         | 158         | 173         | 160         | 141         | 150         | 100         | 106         | 67          | 87          | 1587         | 4          |
| Left department before assessment        | 79          | 138         | 83          | 111         | 131         | 89          | 76          | 82          | 91          | 43          | 75          | 62          | 1060         | 3          |
| Discharged - adult ED clinic             | 106         | 118         | 90          | 107         | 81          | 81          | 100         | 73          | 63          | 67          | 67          | 77          | 1030         | 3          |
| Discharged - GP nurse                    | 82          | 113         | 83          | 93          | 94          | 80          | 102         | 77          | 72          | 10          | ***         | <6          | 815          | 2          |
| Discharged - paediatric ED               | 51          | 60          | 36          | 55          | 34          | 74          | 53          | 32          | 21          | 45          | 44          | 41          | 546          | 2          |
| Discharged - ear, nose and throat        | 31          | 36          | 30          | 24          | 24          | 19          | 26          | 27          | 25          | 20          | 20          | 15          | 297          | 1          |
| Discharged - maxillary/facial            | 26          | 29          | 22          | 22          | 20          | 26          | 25          | 27          | 21          | 16          | 18          | 18          | 270          | 1          |
| Left department                          | 29          | 25          | 17          | 23          | 20          | 12          | 12          | 13          | 26          | 23          | 7           | 17          | 224          | 1          |
| Transferred to other healthcare provider | 10          | 21          | 15          | 23          | 21          | 26          | 22          | 18          | 17          | 16          | 20          | 14          | 223          | 1          |
| Discharged - walk-in centre              | 12          | 13          | 13          | 22          | 13          | 14          | 9           | 8           | 20          | 14          | 10          | 12          | 160          | 0          |
| Discharged - physiotherapy               | 8           | 7           | 8           | 8           | 18          | 7           | 6           | 12          | 9           | 11          | 12          | 15          | 121          | 0          |
| Unknown                                  | ***         | ***         | ***         | ***         | ***         | <11         | <8          | <12         | <9          | <9          | <7          | <8          | <70          | 0          |
| Died in department                       | ***         | ***         | ***         | ***         | ***         | ***         | ***         | ***         | ***         | ***         | ***         | ***         | ***          | 0          |
| <b>Total</b>                             | <b>3104</b> | <b>3584</b> | <b>3101</b> | <b>3409</b> | <b>3048</b> | <b>3237</b> | <b>3014</b> | <b>2958</b> | <b>2623</b> | <b>2619</b> | <b>2620</b> | <b>2858</b> | <b>36175</b> | <b>100</b> |

\*GP=General Practitioner

**Table 5: Assault attendances by location of assault, April 2012 to March 2013**

| Assault location            | Apr        | May        | Jun        | Jul        | Aug        | Sep        | Oct        | Nov        | Dec        | Jan        | Feb        | Mar       | Total       | %          |
|-----------------------------|------------|------------|------------|------------|------------|------------|------------|------------|------------|------------|------------|-----------|-------------|------------|
| Public space                | 55         | 46         | 33         | 45         | 51         | 51         | 51         | 45         | 48         | 48         | 41         | 37        | 551         | 39         |
| Home                        | 30         | 22         | 20         | 25         | 33         | 18         | 21         | 14         | 19         | 18         | 12         | 12        | 244         | 17         |
| Street/road                 | 17         | 18         | 38         | 17         | 29         | 18         | 8          | 23         | 27         | 18         | 19         | 8         | 240         | 17         |
| Other                       | ***        | ***        | 6          | 9          | 14         | 8          | 13         | 6          | 14         | 10         | 8          | 9         | 105         | 7          |
| Public house                | 8          | ***        | 5          | ***        | 9          | ***        | 5          | 5          | 10         | 12         | 8          | 6         | 79          | 6          |
| Night club                  | ***        | 5          | 7          | ***        | ***        | ***        | 5          | 5          | 12         | ***        | ***        | 7         | 58          | 4          |
| Workplace                   | ***        | 8          | ***        | 5          | ***        | 5          | ***        | 5          | ***        | ***        | ***        | ***       | 42          | 3          |
| Public park                 | ***        | ***        | ***        | ***        | 5          | 9          | ***        | 8          | ***        | ***        | ***        | ***       | 41          | 3          |
| School                      | ***        | 5          | ***        | ***        | ***        | ***        | ***        | ***        | ***        | ***        | ***        | 5         | 24          | 2          |
| Hospital                    | ***        | ***        | ***        | ***        | ***        | ***        | ***        | ***        | ***        | ***        | ***        | ***       | 11          | 1          |
| Railway station             | ***        | ***        | ***        | ***        | ***        | ***        | ***        | ***        | ***        | ***        | ***        | ***       | 11          | 1          |
| Unknown                     | ***        | ***        | ***        | ***        | ***        | ***        | ***        | ***        | ***        | ***        | ***        | ***       | 6           | 0          |
| Details withheld by patient | ***        | ***        | ***        | ***        | ***        | ***        | ***        | ***        | ***        | ***        | ***        | ***       | 6           | 0          |
| Leisure facility            | ***        | ***        | ***        | ***        | ***        | ***        | ***        | ***        | ***        | ***        | ***        | ***       | 6           | 0          |
| Shops                       | ***        | ***        | ***        | ***        | ***        | ***        | ***        | ***        | ***        | ***        | ***        | ***       | 5           | 0          |
| Car park                    | ***        | ***        | ***        | ***        | ***        | ***        | ***        | ***        | ***        | ***        | ***        | ***       | ***         | 0          |
| On public transport         | ***        | ***        | ***        | ***        | ***        | ***        | ***        | ***        | ***        | ***        | ***        | ***       | ***         | 0          |
| <b>Total</b>                | <b>126</b> | <b>115</b> | <b>116</b> | <b>117</b> | <b>151</b> | <b>127</b> | <b>115</b> | <b>113</b> | <b>140</b> | <b>120</b> | <b>103</b> | <b>92</b> | <b>1435</b> | <b>100</b> |

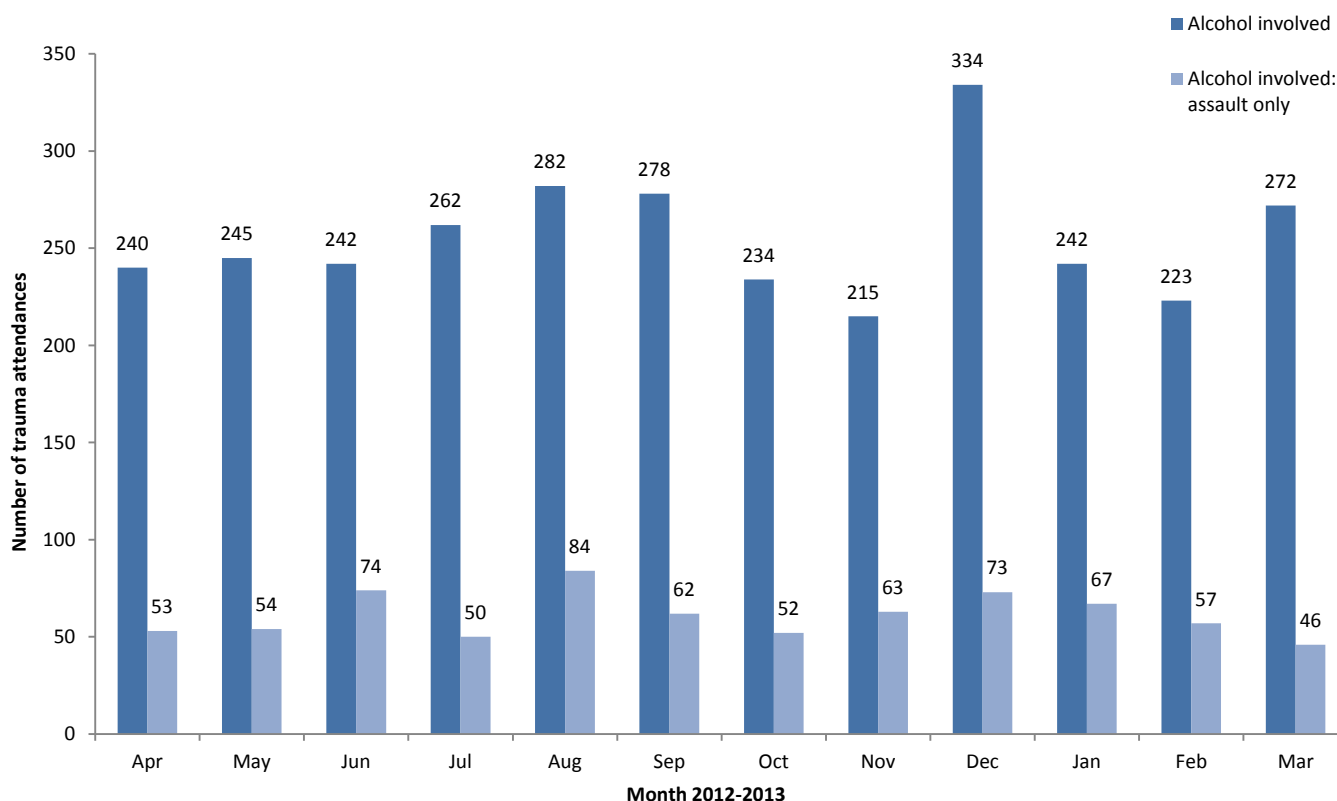
**Table 6: Assault attendances by geographical location of assault, April 2012 to March 2013**

| Geographical assault location | Apr        | May        | Jun        | Jul        | Aug        | Sep        | Oct        | Nov        | Dec        | Jan        | Feb        | Mar       | Total       | %          |
|-------------------------------|------------|------------|------------|------------|------------|------------|------------|------------|------------|------------|------------|-----------|-------------|------------|
| Birkenhead centre             | 28         | 28         | 36         | 23         | 37         | 36         | 24         | 30         | 41         | 34         | 26         | 35        | 378         | 26         |
| Wallasey-Seacombe             | 24         | 24         | 8          | 12         | 20         | 12         | 15         | 17         | 14         | 11         | 19         | 11        | 187         | 13         |
| Bidston-Prenton-Oxton         | 16         | 7          | 6          | 20         | 18         | 9          | 10         | 9          | 15         | 10         | ***        | ***       | 126         | 9          |
| Other                         | 5          | 9          | 12         | 7          | 11         | 13         | 11         | 10         | 8          | 7          | 15         | 8         | 116         | 8          |
| New Ferry-Rock Ferry          | 10         | 8          | 12         | 15         | 11         | 8          | 10         | ***        | 8          | <6         | 7          | 7         | 105         | 7          |
| Liverpool city centre         | 6          | 5          | 6          | ***        | 13         | ***        | ***        | 7          | 11         | 12         | 7          | 10        | 86          | 6          |
| Greasby-Upton-Arrowe Park     | 5          | ***        | 8          | 8          | 6          | 12         | 6          | 9          | 6          | 7          | 7          | ***       | 81          | 6          |
| Moreton-Leasowe               | 7          | ***        | 5          | 5          | 10         | 6          | 12         | 7          | 6          | ***        | 9          | ***       | 74          | 5          |
| New Brighton                  | 6          | ***        | ***        | 5          | 7          | ***        | ***        | ***        | 9          | 6          | ***        | ***       | 54          | 4          |
| Bromborough-Eastham           | 5          | ***        | 7          | ***        | ***        | ***        | 5          | ***        | 6          | ***        | ***        | ***       | 49          | 3          |
| Heswall-Pensby-Thingwall      | ***        | 8          | ***        | ***        | ***        | 5          | 5          | 5          | ***        | 10         | ***        | ***       | 48          | 3          |
| Bebington                     | 5          | 5          | ***        | 5          | 5          | ***        | 5          | ***        | 5          | ***        | ***        | ***       | 45          | 3          |
| West Kirby                    | ***        | 5          | ***        | ***        | ***        | 6          | ***        | ***        | ***        | ***        | ***        | ***       | 34          | 2          |
| Neston-Parkgate               | ***        | ***        | ***        | ***        | ***        | 5          | ***        | ***        | ***        | ***        | ***        | ***       | 21          | 1          |
| Meols-Frankby-Hoylake         | ***        | ***        | ***        | ***        | ***        | ***        | ***        | ***        | ***        | ***        | ***        | ***       | 11          | 1          |
| Refused to answer             | ***        | ***        | ***        | ***        | ***        | ***        | ***        | ***        | ***        | ***        | ***        | ***       | 8           | 1          |
| Unknown                       | ***        | ***        | ***        | ***        | ***        | ***        | ***        | ***        | ***        | ***        | ***        | ***       | 6           | 0          |
| Ellesmere Port-Cheshire Oaks  | ***        | ***        | ***        | ***        | ***        | ***        | ***        | ***        | ***        | ***        | ***        | ***       | 6           | 0          |
| <b>Total</b>                  | <b>126</b> | <b>115</b> | <b>116</b> | <b>117</b> | <b>151</b> | <b>127</b> | <b>115</b> | <b>113</b> | <b>140</b> | <b>120</b> | <b>103</b> | <b>92</b> | <b>1435</b> | <b>100</b> |

**Table 7: Assault attendances by number of attackers, April 2012 to March 2013**

| Number of attackers | Apr        | May        | Jun        | Jul        | Aug        | Sep        | Oct        | Nov        | Dec        | Jan        | Feb        | Mar       | Total       | %          |
|---------------------|------------|------------|------------|------------|------------|------------|------------|------------|------------|------------|------------|-----------|-------------|------------|
| 1 attacker          | 67         | 77         | 57         | 75         | 98         | 77         | 84         | 69         | 80         | 65         | 69         | 55        | 873         | 61         |
| More than 2         | 40         | 21         | 33         | 28         | 28         | 33         | 15         | 26         | 41         | 39         | 18         | 19        | 341         | 24         |
| 2 attackers         | 5          | 6          | <20        | 6          | 10         | 6          | <13        | 10         | 12         | 8          | 8          | 10        | 112         | 8          |
| Unknown             | 14         | 11         | <8         | 8          | 15         | 11         | ***        | 8          | 7          | 8          | 8          | 8         | 109         | 8          |
| <b>Total</b>        | <b>126</b> | <b>115</b> | <b>116</b> | <b>117</b> | <b>151</b> | <b>127</b> | <b>115</b> | <b>113</b> | <b>140</b> | <b>120</b> | <b>103</b> | <b>92</b> | <b>1435</b> | <b>100</b> |

**Figure 3: Injury and assault attendances by whether alcohol had been consumed within three hours prior to the incident, April 2012 to March 2013**



**Table 8: Injury group of attendees aged 0-4 and 60 years plus only, April 2012 to March 2013**

| Injury group           | 0-4         |            | 60 plus     |            |
|------------------------|-------------|------------|-------------|------------|
|                        | N           | %          | N           | %          |
| Assault                | ***         | 0          | 35          | 0          |
| Bite                   | 41          | 1          | 43          | 1          |
| Burn                   | 117         | 4          | 49          | 1          |
| Drown/immersion        | ***         | 0          | 0           | 0          |
| Deliberate self-harm   | 0           | 0          | 37          | 0          |
| Electrical             | ***         | 0          | 0           | 0          |
| Fall                   | 1687        | 53         | 5577        | 73         |
| Firearm                | 0           | 0          | 0           | 0          |
| Firework               | 0           | 0          | ***         | 0          |
| Glass                  | ***         | 0          | 0           | 0          |
| Ingestion              | 102         | 3          | 20          | 0          |
| Inhalation             | 6           | 0          | 27          | 0          |
| Non-drown asphyxia     | 0           | 0          | 0           | 0          |
| Non-fire burn/scald    | ***         | 0          | 0           | 0          |
| Other                  | 546         | 17         | 768         | 10         |
| Road traffic collision | 95          | 3          | 195         | 3          |
| Sports injury          | ***         | 0          | 37          | 0          |
| Stab                   | ***         | 0          | ***         | 0          |
| Struck                 | 341         | 11         | 381         | 5          |
| Wound or cut           | 231         | 7          | 504         | 7          |
| <b>Total</b>           | <b>3175</b> | <b>100</b> | <b>7675</b> | <b>100</b> |

Published June 2013

Jennifer Brizell (Merseyside and Cheshire TIIG researcher)

Centre for Public Health, Faculty of Health and Applied Social Sciences, Liverpool John Moores University

2<sup>nd</sup> Floor, Henry Cotton Campus, 15-21 Webster Street, Liverpool, L3 2ET

Tel: 0151 231 4500 Email: [j.s.brizell@ljmu.ac.uk](mailto:j.s.brizell@ljmu.ac.uk)

Website: [www.tiig.info](http://www.tiig.info) (please note all data requests should be made through the TIIG website)